

Behaviour monitoring

Use case

Datasheet

What happens when anti-virus fails?

Anti-virus is useless for IoT devices and phishing attacks. And with the prevalence of both nowadays, it's clear you need an additional layer of threat detection.

Many organisations are using packet capture to figure out what happened after an incident. But packet capture creates enormous amounts of data. As a result, organisations do not store it for very long, it's often been deleted by the time you need it. The heavy network load also means it can't always be on and if you aren't recording during an incident, you have nothing.

This highlights the need for lightweight real-time monitoring. Many organisations are seduced by sexy artificial intelligence products that monitor against an acceptable "baseline". But it always gets turned off after a few frustrating months of drowning in false positives. An AI has no understanding of important context like how that spike in traffic once a month is normal for a payroll server.

“

“64% of reported breaches are detected by people and not technology.”

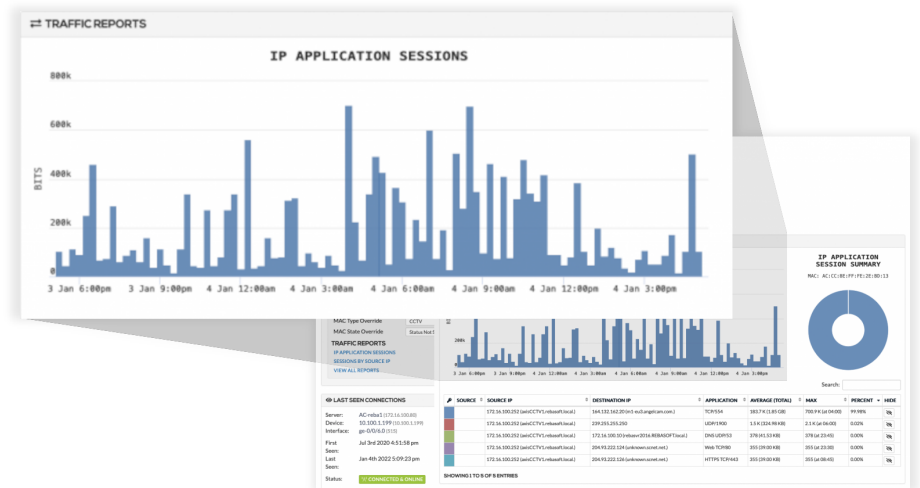
These are the problems we hear

- **Drowning in false positives**
- **Slow threat detection**—attackers aren't flagged when they enter, only once they've made enough noise to go above "baseline"
- **Flying under the radar**—attackers can figure out your baseline and move just slow enough to stay below it
- **No understanding of context** like working hours, monthly activities or the method of acceptable communication for a specific device

Rebasoft can help

With Rebasoft you can create traffic profiles of acceptable behaviour tailored to each device type. It monitors in real-time for devices acting outside their profile and sends alerts when they do.

So when your CCTV camera starts requesting an SSH connection to another device, something it really shouldn't be doing, you'll immediately be alerted.



The benefits of this approach

- **Understands context**—the way in which a device communicates is more important than the sheer amount of traffic
- **Fewer false positives**—alerts are based on specific parameters, not the vague “amount of difference from baseline”
- **Quicker detection**—get an alert as soon as a device acts outside its profile, not when an attacker is already moving large quantities of data
- **Lightweight and real-time** using NetFlow data, it's always on and you can store logs for a longer time

How we provide value

Rebasoft discovers, assesses and tracks security compliance all from one platform.

- **A single deployment** collecting and consolidating information means you do not need humans to manually collate and report on data
- **Integration into asset management** means you do not need to spend hours tracking down systems that need security remediation
- **Lightweight**—collecting information effectively and automatically reduces the load on managed IT systems
- **Fewer systems and automation** helps reduce complexity and workload on busy IT teams
- **Automation** helps eliminate manual tasks and reduces human error

But that's just the start

Using the asset discovery system as a base, Rebasoft provides the functionalities of multiple cyber security programs like:

- Asset management
- Secure configuration
- Vulnerability management

So with Rebasoft, you can cover the same ground with less solutions. So, you can save money and reduce complexity, because it's all seamlessly integrated.

So why not find out more by booking a live demo with an expert?

Try it now

There's nothing like seeing it in action. After all, you wouldn't buy a car without test driving it.

[BOOK A DEMO](#)

Contact us

You can also get in touch via phone or email. We'll happily answer any questions.

Phone: +44 (0) 800 779 7322

Email: sales@rebasoft.net

21 London Road
Twyford
RG10 9EH
United Kingdom

About us

We at Rebasoft are committed to delivering a robust cyber security solution that addresses genuine business needs. We are not interested in a "silver bullet" approach. We believe that multiple functionalities from one platform and real-time data are essential for keeping up with today's cyber threat landscape. We believe this approach is the future of cyber security and we aim to be the pioneers. We are proudly a UK based company. Visit us at www.rebasoft.net

Rebasoft is still owned and managed by the original founders:

Philip Harragan
CEO & Founder
[LinkedIn](#) - [Facebook](#)

Steve Wilkinson
CTO & Founder
[LinkedIn](#) - [Facebook](#) - [Twitter](#)