

NetOps & SecOps

Use case

Datasheet



NetOps and SecOps are separate functions

Today, more than ever they need to work together. Without communication or collaboration they develop their own tools, systems and reports. They have conflicting objectives. Network teams want to allow access for usability. Security teams want to take it away for security.

But as cyber security matures, organisations are realising the importance of making decisions through communication and collaboration between the two.

Separate tools and systems get in the way of this because both are working from different data. There's unnecessary costs as they are using separate programs to fundamentally look at the same thing.

“

“With Rebasoft I can now see all my network attached devices - in one system - and validate them for compliance purposes”

CISO, charity

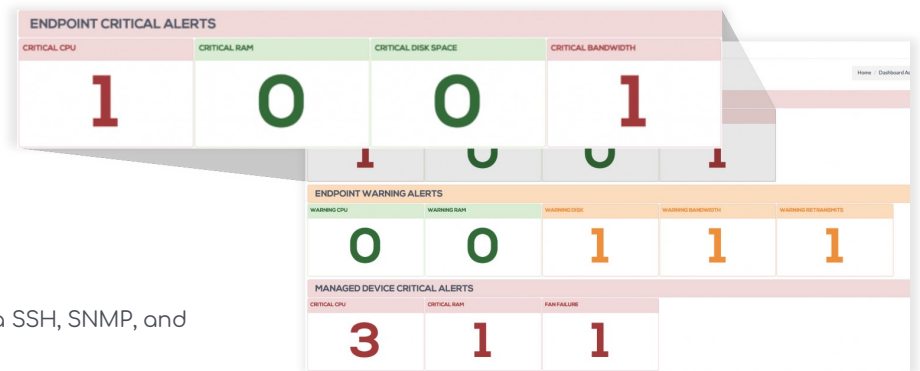
These are the problems we hear:

- **Gaps in what you can see** due to isolated systems with no integration
- **Poor communication** because NetOps and SecOps are working from separate tools
- **Poor threat response** due to poor communication
- **Paying for unnecessary programs**

Rebasoft can help

Rebasoft provides NMS (network monitoring system) facilities as well as security features:

- Monitor switch and server performance parameters including CPU, RAM, disk, fan, temperature and power
- Monitor other devices as required via SSH, SNMP, and PowerShell
- So with Rebasoft, you can help your network and security teams can collaborate by using the same tools.



What are the benefits?

- **Save money**—cut down on unnecessary software
- **Better communication**—everyone is on the same page, looking at the same data
- **Faster response** to issues due to collaboration
- **Better visibility**—Rebasoft's real-time asset discovery and inventory system is more accurate than traditional active scan based systems

How we provide value

Rebasoft discovers, assesses and tracks security compliance all from one platform.

- **A single deployment** collecting and consolidating information means you don't need to manually collate and report on data
- **Integration into asset management** means you do not need to waste hours tracking down systems that need security remediation
- **Lightweight**—collecting information effectively and automatically reduces the load on managed IT systems
- **Fewer systems and automation** helps reduce complexity and workload on busy IT teams
- **Automation** reduces manual tasks and human error

But that's just the start

Using the asset discovery system as a base, Rebasoft provides the functionalities of multiple cyber security programs like:

- Asset management
- Secure configuration
- Vulnerability management

So with Rebasoft, you can cover the same ground with less solutions. So, you can save money and reduce complexity, because it's all seamlessly integrated.

So why not find out more by booking a live demo with an expert?

Try it now

There's nothing like seeing it in action. After all, you wouldn't buy a car without test driving it.

[BOOK A DEMO](#)

Contact us

You can also get in touch via phone or email. We'll happily answer any questions.

Phone: +44 (0) 800 779 7322

Email: sales@rebasoft.net

21 London Road
Twyford
RG10 9EH
United Kingdom

About us

We at Rebasoft are committed to delivering a robust cyber security solution that addresses genuine business needs. We are not interested in a "silver bullet" approach. We believe that multiple functionalities from one platform and real-time data are essential for keeping up with today's cyber threat landscape. We believe this approach is the future of cyber security and we aim to be the pioneers. We are proudly a UK based company. Visit us at www.rebasoft.net

Rebasoft is still owned and managed by the original founders:

Philip Harragan
CEO & Founder
[LinkedIn](#) - [Facebook](#)

Steve Wilkinson
CTO & Founder
[LinkedIn](#) - [Facebook](#) - [Twitter](#)