

# Continuously defend your assets from threats and vulnerabilities.

## Needing multiple systems takes too much money and work.

Working from a “patchwork of programs” means visibility is fragmented and what should be simple tasks, require jumping between a dozen programs.

The result is that IT teams take too long to remediate issues and can’t take proactive measures to protect their organisation from threats and attacks.

## Rebasoft offers integrated security:

### 1 See *all* your digital IT assets.

Using cutting edge technology, Rebasoft shows you all your digital IT assets in real-time. This is the foundation for all other features.

### 2 Asset-based, ‘always-on’ vulnerability management.

Without needing to schedule network scans, Rebasoft automatically matches CVEs to assets, so you don’t have to. You can click directly on an asset to easily drill-down into it’s vulnerabilities, enabling faster remediation.

### 3 Traffic monitoring.

Rebasoft monitors network traffic, giving you real-time insights. You can detect lateral movement and automate the isolation of ‘rogue’ devices.

## Benefits:

- 1 **Real-time visibility** - so you can be sure you never miss a vulnerability.
- 2 **Automation** - reducing workloads to enable proactive security.
- 3 **No scheduling scans** - no working around others.
- 4 **Fewer repeat vulnerabilities** - since they’re tracked on a per-device basis.
- 4 **Natively integrated** - no need to jump between programs.
- 5 **Comprehensive reporting** - can be used to aid compliance, governance and as supporting information for security standards.

# The Rebasoft defend system.

## Vulnerability management

Rebasoft continuously checks for vulnerabilities in your systems:

- 1 Agentless.
- 2 Scanless.
- 3 Continuous assessment.
- 4 Contextual and per-device logging - reduces repeats.
- 5 Reporting on time to resolution - helps with maintaining patching SLA's needed for standards conformance.
- 6 Automation and API's to integrate with patching systems.

CVE ID	DESCRIPTION	PRODUCT	SEVERITY	FIRST SEEN	CURRENT STATUS	STATUS CHANGE DATE	ACTION
CVE-2023-32887	A use-after-free issue was addressed with improved memory management. This issue is fixed in macOS Big Sur 11.7.7, macOS Monterey 12.6.4, macOS Ventura 13.4. A remote attacker may be able to cause unexpected app termination or arbitrary code execution.	apple macOS 11.7.6	CRITICAL (9)	Jul 19, 2023, 9:59:10 AM	ACTIVE	Jul 19, 2023, 9:59:10 AM	DETAILS IGNORE
CVE-2023-32842	A use-after-free issue was addressed with improved memory management. This issue is fixed in watchOS 9.6, iOS 16.5, macOS Ventura 13.4, iOS 16.7.6 and iPodOS 16.7.6, macOS Big Sur 11.7.7, macOS Monterey 12.6.4, iOS 16.5 and iPodOS 16.5. A remote attacker may be able to cause unexpected app termination or arbitrary code execution.	apple macOS 11.7.6	CRITICAL (9)	Jul 19, 2023, 9:59:10 AM	ACTIVE	Jul 19, 2023, 9:59:10 AM	DETAILS IGNORE
CVE-2023-32887	An authorization issue was addressed with improved state management. This issue is fixed in watchOS 9.6, iOS 16.5, macOS Ventura 13.4, macOS Big Sur 11.7.7, macOS Monterey 12.6.4, iOS 16.5 and iPodOS 16.5. An app may be able to retain access to system configuration files even after its permission is revoked.	apple macOS 11.7.6	HIGH (7)	Jul 19, 2023, 9:59:10 AM	ACTIVE	Jul 19, 2023, 9:59:10 AM	DETAILS IGNORE

## Network Access Control

Identify and isolate rogue devices

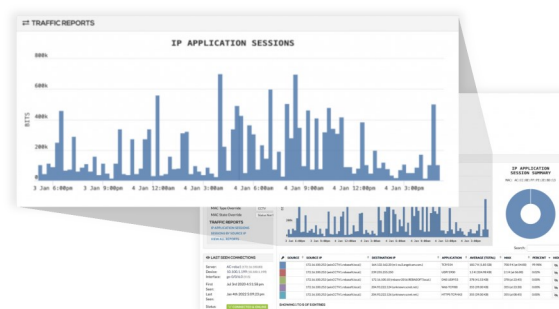
- 1 Agentless, no supplicant needed.
- 2 No network replacement or upgrades needed (only manageable switches).
- 3 Traffic monitoring supports non-user devices - no need to maintain mac whitelists.



## Traffic monitoring

Integrated traffic monitoring:

- 1 Profiling - to ensure systems conform with expected norms of communication - useful for IoT and other critical systems.
- 2 Identify east-west lateral movement which might indicate malware.
- 3 Deny/Blacklist monitoring, to see attempts to circumvent security (e.g. with VPN, TOR) or connections to C&C control devices.



## Contact us

Phone: +44 (0) 800 779 7322

Email: [sales@rebasoft.net](mailto:sales@rebasoft.net)

Web: [www.rebasoft.net](http://www.rebasoft.net)

21 London Road  
Twyford  
RG10 9EH  
United Kingdom